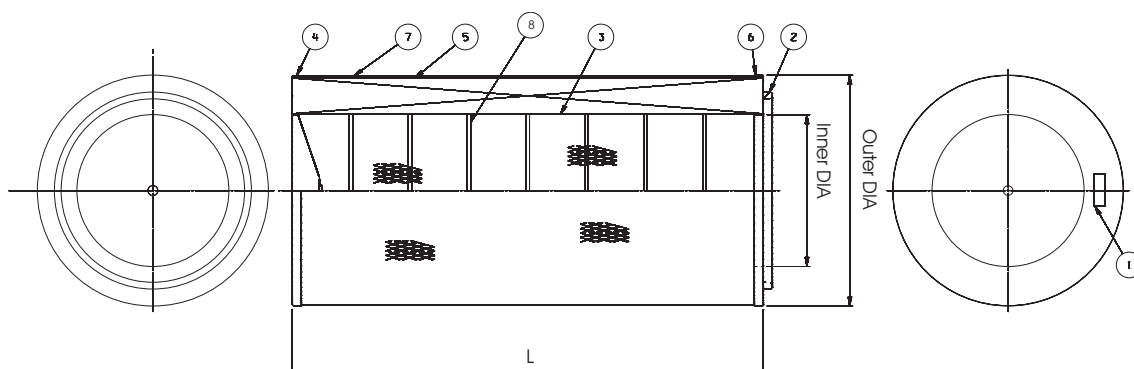


# Replacement Elements Cartridges

## Series 324



**DIN top flange**  
Closed bottom + hole 13 mm

### SPECIFICATIONS

Number	Description
1	Marking
2	Gasket
3	Inner liner
4	Bottom end cap with 13 mm hole
5	Media pack
6	Top end cap
7	Outer liner
8	Inner beading

Symbol	Dimension
L	600 - 660 - 1000* - 1200 mm
Inner DIA	213 mm
Outer DIA	324 mm

#### Available media qualities:

- Ultra-Web®
- Ultra-Web® Flame Retardant
- Cellulex™
- Cellulex™ Flame Retardant
- \* Only available in UW

# Replacement Elements Cartridges

---