

# GD Connect 12

## Air Management System



- State-of-the-art Technology
- Maximum Energy Efficiency
- Easy User Guidance

**Think Smarter.**  
**Think Gardner Denver.**

**GD**  
**GARDNER DENVER**

*Experience Proven Results™*



## State-of-the-art Technology

# GD Connect 12 Sequencer with up to 35% energy savings!



- Easy to install
- Improved performance and efficiency
- Simple to operate
- Detailed management reports

## Unique Compressed Air Management System

Compressors systems are typically comprised of multiple compressors delivering air to a common header. The combined capacity of these machines is generally greater than the maximum site demand. To ensure the system is operated to the highest levels of efficiency, the “GD Connect 12” management system is essential.

### Maximum Flexibility

The **GD Connect 12** can intelligently control up to 12 fixed speed or variable speed compressors.

- Intelligently selecting the right combination of compressors.
- It reduces energy consumption by tightening the network pressure to the smallest possible band.
  - Each 1 bar decrease potentially results in a 6% reduction in energy consumption and as much as 25% decrease in air leakage losses.
- Keeping off load running to the absolute minimum.



## Advanced Microprocessor Technology

Safe and fast exchange of large amounts of data is ensured by large memory capacity using the latest microprocessor technology at the heart of the **GD Connect 12**.

The system software can also be updated quick and easily to accommodate the very latest functions and technology developments.

## Unique Setting-Up Function

Thanks to our modern Commissioning Wizard the setting-up time is reduced to a minimum.

Gardner Denver has designed the controller to be very easy to install, with a series of on-screen prompts that guide the commissioning engineer through the set up and confirm when each parameter has been programmed correctly.

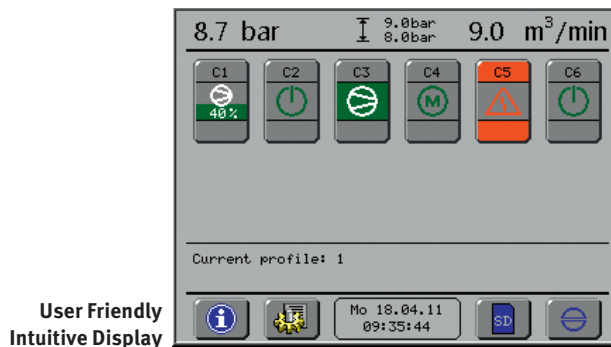
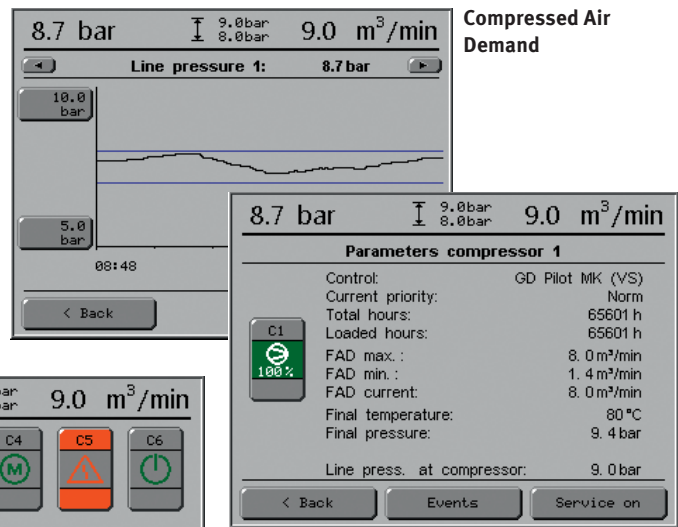
Additionally once each compressor is connected to the "GD Connect 12", the engineer need only to enter a minimal amount of information as the controller will identify all the units in the system and will self-programme many stages.

## Easy-to-use Touchscreen Display

**GD Connect 12** provides a variety of performance data on a visual touchscreen, giving plant managers a comprehensive overview of the complete system, including downstream equipment to help improve the complete network performance.

This can include information such as the status of the whole system or of each compressor connected, as well as network pressure, compressed air consumption and pressure range, all of which can be presented in graphs or tables.

In addition, data can be transferred via removable SD card to a PC for further analysis and management reports.

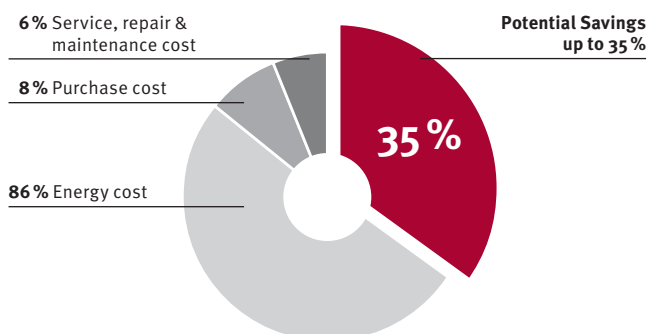


Characteristics of each Compressor

## Ability For Huge Energy Efficiency

The **GD Connect 12** is the first choice when looking to optimise an existing compressed air system. The pressure reductions are achieved as a result of the narrow pressure band control helping to considerably reduce power consumption both of small and larger compressed air systems.

### Cost of compressed air over 5 years



## Extensive Visualisation Options

A local network connection can be installed, allowing system data to be viewed using the optional web server module.

Any number of users can access the online visual display system via the web server without any loss in speed.



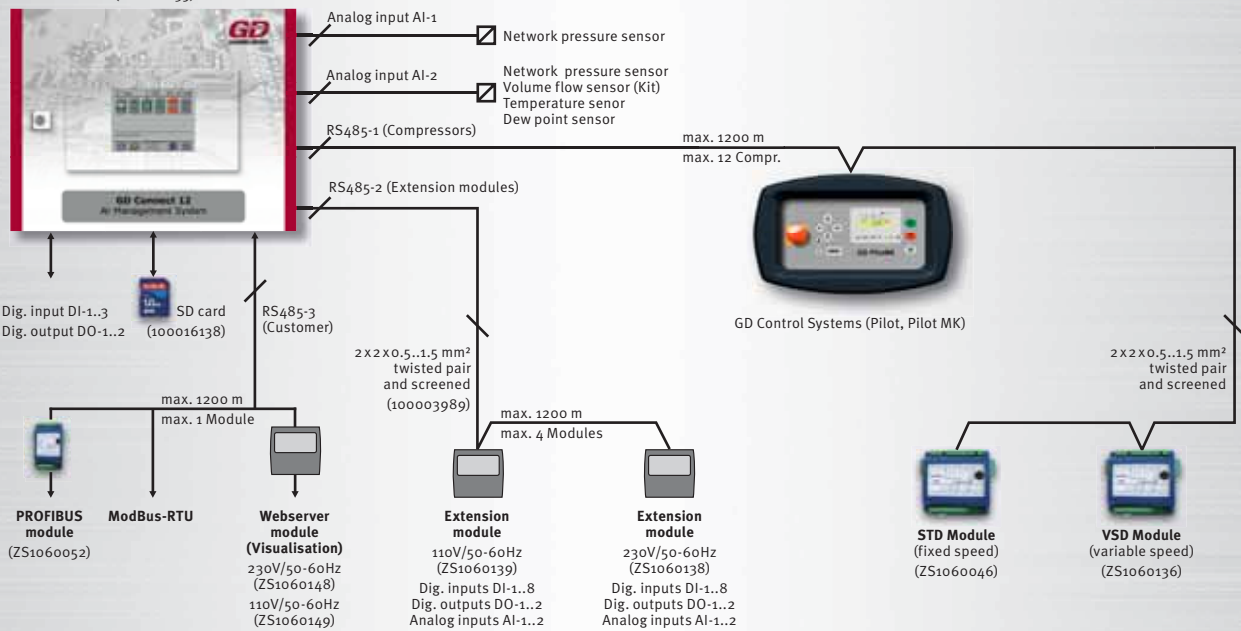
# Technical Summary

| ELECTRICAL CONNECTION            |   |
|----------------------------------|---|
| System                           | 1~/N/PE                                     |
| Voltage                          | 110/230V +/-10% 50/60 Hz                    |
| DISPLAY                          |   |
| Type                             | Colour graphics display with touch function |
| Screen size                      | 5.7"  |
| INTERFACES                       |   |
| Analogue inputs                  | 2   |
| Digital inputs                   | 3   |
| Relay outputs                    | 2   |
| MEMORY CARD                      |   |
| Type                             | SD card                                     |
| CONNECTION FOR COMPRESSORS       |   |
| Quantity                         | max. 12 Compressors                         |
| Interface                        | RS485                                       |
| Distance from GD Connect 12      | max. 1200 m                                 |
| CUSTOMER INTERFACE               |   |
| Interface                        | RS485                                       |
| Distance from GD Connect 12      | max. 1200 m                                 |
| Protocol                         | ModBus-RTU or PROFIBUS (optional)           |
| PERMISSIBLE AMBIENT TEMPERATURES |   |
| Operations                       | 0 to 55°C                                   |
| Storage                          | -25 to 75°C                                 |

| EMC CONFORMITY  |  |
|---|--|
| Emissions   | DIN EN 61000-6-3                                     |
| Interference suppression                                | DIN EN 61000-6-2                                     |
| HOUSING   |  |
| Dimensions (W x H x D)                                  | 380 x 300 x 155 mm                                   |
| Design  | Steel plate housing                                  |
| Type of protection                                      | IP54   |
| Weight  | 11 kg  |
| SCOPE OF SUPPLY   |  |
| - GD Connect 12 including cable glands                  |  |
| - Network pressure sensor                               |  |
| - Set of plugs for connecting to compressor controllers |  |
| - SD card   |  |
| - Documentation   |  |
| OPTIONS   |  |
| Compressor module (STD)                                 | For connecting standard external compressors         |
| Compressor module (VSD)                                 | For connecting speed-controlled external compressors |
| Extension module  | For extending the programmable inputs / outputs      |
| PROFIBUS module   | For connection to a PROFIBUS network                 |
| Web server module                                       | For visualising via LAN or online                    |

## Latest Technology Tools Used

GD CONNECT 12 (ZS1060135)



For additional information please contact Gardner Denver or your local representative.



gdcompressors.eu@gardnerdenver.com  
www.gardnerdenverproducts.com

Specifications subject to change without notice.  
Copyright 2011 Gardner Denver.